



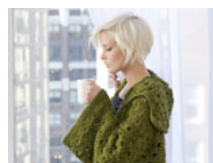
[Click to Enlarge](#)



[Click to Enlarge](#)



[Click to Enlarge](#)



Penny Arcade Jacket

Designed by Vickie Howell

[printer-friendly pdf](#)

INTERMEDIATE

Technique used: Crochet

SIZES

S (M, L, 1X, 2X, 3X)

FINISHED MEASUREMENTS

Bust: 36 (42, 46, 52, 58, 62)"/91.5 (106.5, 117, 132, 147.5, 157.5)cm

Length: 27 1/2 (28, 28 1/2, 29, 29 1/2, 30)"/70 (71, 72.5, 73.5, 75, 76)cm

MATERIALS

[Shop Online](#)

[Stitch.Rock.Love. Sheep\(ish\) from Caron](#) (70% Acrylic/30% Wool; 3oz/85g, 167yds/153m)

#0019 Olive(ish): 8 (10, 11, 13, 15, 17) balls (plus 1 additional ball for optional belt).

[Shop Online](#)

[One size US J-10 \(6mm\) crochet hook,](#)

[One size US N-13 \(9mm\) crochet hook,](#) or size to obtain gauge

ADDITIONAL MATERIALS

Yarn needle

GAUGE

In pattern, 4 pattern repeats = 6 1/2"/16.5cm and 8 rows = 4"/10cm using larger hook.

STITCHES USED

Chain (ch), double crochet (dc), single crochet (sc), slip stitch (sl st)

SPECIAL STITCHES

sc2tog: Single crochet 2 together—Insert hook in next stitch, yarn over and draw up a loop, (2 loops on hook), insert hook in next stitch, yarn over and draw up a loop, yarn over and draw through all 3 loops on hook.

PATTERN STITCH

Arcade Stitch (multiple of 6 sts + 1)

Row 1 (WS): Ch 1, sc in first 2 sts, ch 3, sk next 3 sts, *sc in next 3 sts, ch 3, sk next 3 sts; repeat from * across to last 2 sts, sc in last 2 sts, turn.

Row 2: Ch 1, sc in first sc, 5 dc in next ch-3 sp, sk next sc, *sc in next sc (center sc of 3-sc group), 5 dc in next ch-3 sp; repeat from * across to last 2 sc, sk next sc, sc in last sc, turn.

Row 3: Ch 1, sc in first st, ch 2, sk next st, sc in next 3 dc, *ch 3, sk next 3 sts, sc in next 3 dc; repeat from * across to last 2 sts, ch 2, sk next st, sc in last st, turn.

Row 4: Ch 3 (counts as dc here and throughout), sk first st, 2 dc in next ch-2





Click to Enlarge



Click to Enlarge



Click to Enlarge



Click to Enlarge

sp, sk next sc, sc in next sc, *5 dc in next ch-3 sp, sk next sc, sc in next sc; repeat from * across to last ch-2 sp, 2 dc in last ch-2 sp, dc in last sc, turn.

Row 5: Ch 1, sc in first 2 dc, ch 3, sk next 3 sts, *sc in next 3 sts, ch 3, sk next 3 sts; repeat from * across, sc in last dc, sc in top of turning ch, turn.

Repeat Rows 2-5 for Arcade pattern.

BACK

With larger hook, ch 68 (80, 86, 98, 110, 116) sts.

Row 1: Sc in 2nd ch from hook and in each remaining ch across, turn—67 (79, 85, 97, 109, 115) sc.

Row 2 (RS): Ch 1, sc in each sc across, turn.

Row 3: Work Row 1 of Arcade pattern—11 (13, 14, 16, 18, 19) pattern repeats.

Continue in Arcade pattern (repeating Rows 2-5 of the pattern) until piece measures 14"/35.5cm from beginning.

Change to smaller hook (for subtle shaping), continue in Arcade pattern until piece measures 17"/43cm from beginning.

Change to larger hook, continue in Arcade pattern until piece measures about 20"/51cm from beginning, end with a Row 3 of Arcade pattern.

Shape Armhole

Next Row (RS): Ch 1, sl st in first 2 ch, sl st in next 2 sc, 5 dc in next ch-3 sp, *sk next sc, sc in next sc, 5 dc in next ch-3 sp; repeat from * across to last 3-sc group, sk next sc, sl st in next 2 sc, turn; leave remaining sts unworked.

Next Row: Ch 1, sk first dc, sc in next 3 dc, *ch 3, sk next 3 sts, sc in next 3 dc; repeat from * across to last dc; turn, leave last dc unworked—9 (11, 12, 14, 16, 17) pattern repeats.

Next Row: Ch 1, turn, sc in first 2 sc, *5 dc in next ch-3 sp, sk next sc, sc in next sc; repeat from * across to last sc, sc in last sc, turn.

Beginning with Row 2 of pattern, work in Arcade pattern until piece measures 27 (28, 29, 30, 31, 32)"/68.5 (71, 73.5, 76, 78.5, 81.5)cm from beginning. Fasten off.

FRONT (make 2)

With larger hook, ch 38 (44, 50, 56, 62, 68).

Row 1: Sc in 2nd ch from hook and in each remaining ch across—37 (43, 49, 55, 61, 67) sc.

Row 2: Ch 1, sc in each sc across, turn.

Row 3: Work Row 1 of Arcade pattern—6 (7, 8, 9, 10, 11) pattern repeats.

Continue in Arcade pattern until piece measures 20"/51cm from beginning, end with a Row 3 of Arcade pattern.

Shape Armhole and Neck

Row 1: Ch 1, sl st in first 2 ch, sl st in next 2 sc, 5 dc in next ch-3 sp, *sk next sc, sc in next sc, 5 dc in next ch-3 sp; repeat from * across to last 3-sc group, sk next 2 sc, sc2tog over next sc and first ch of ch-2 sp, turn; leave remaining sts unworked.

Row 2: Ch 1, sk first 2 sts, sc in next 3 dc, *ch 3, sk next 3 sts, sc in next 3 dc; repeat from * across to last dc, sc in last dc; turn—4 (5, 6, 7, 8, 9) pattern repeats.

Row 3: Ch 1, turn, sk first sc, sc in next 2 sc, *5 dc in next ch-3 sp, sk next sc, sc in next sc; repeat from * across to last ch-3 sp, 5 dc in last ch-3 sp, sk next 2 sc, sc2tog over last 2 sc, turn.

Row 4: Ch 1, sk first 2 sts, sc in next 3 dc, *ch 3, sk next 3 sts, sc in next 3 dc; repeat from * across to last 3 sts, ch 2, sk next 2 sts, sc in last sc, turn.

Row 5: Ch 3, 2 dc in next ch-2 sp, sk next sc, sc in next sc, *5 dc in next ch-3 sp, sk next sc, sc in next sc; repeat from * across to last sc, sk last sc, dc in beginning ch-1, turn.

Row 6: Ch 1, sk first 3 sts, sc in next 3 dc, ch 3, sk next 3 sts, *sc in next 3 dc, ch 3, sk next 3 sts; repeat from * across, sc in last dc, sc in top of beginning ch-3, turn—3 (4, 5, 6, 7, 8) pattern repeats.

Row 7: Ch 1, sc in first 2 sts, 5 dc in next ch-3 sp, *sk next sc, sc in next sc, 5 dc in next ch-3 sp; repeat from * across to last 3 sc, sk next 2 sc, sc2tog over next sc and beginning ch-1, turn.

Rows 8-10: Repeat Rows 4-6.

Row 11: Ch 1, sc in first sc, 5 dc in next ch-3 sp, *sk next sc, sc in next sc, 5 dc in next ch-3 sp; repeat from * across to last 3-sc group, sk next sc, sc2tog over last 2 sc, turn—2 (3, 4, 5, 6, 7) pattern repeats.

Beginning with Row 3 of pattern, work in Arcade pattern until piece measures same as back. Fasten off.

SLEEVE (make 2)

With larger hook, ch 62 (68, 68, 74, 74, 74).

Row 1 (WS): Sc in 2nd ch from hook and in each remaining ch across, turn—61 (67, 67, 73, 73, 73) sc.

Rows 2-4: Ch 1, sc in each sc across, turn.

Row 5: Work Row 1 of Arcade pattern—10 (11, 11, 12, 12, 12) pattern repeats.

Continue in Arcade pattern until piece measures 18 (17 1/2, 17 1/2, 17, 16, 16)"/45.5 (44.5, 44.5, 43, 40.5, 40.5)cm from beginning, ending with a Row 2 or Row 4 of pattern. Fasten off.

COLLAR

With larger hook, ch 62 (68, 74, 80, 86, 92).

Row 1: Sc in 2nd ch from hook, sc in next ch, ch 3, sk next 3 ch, *sc in next 3 ch, ch 3, sk next 3 ch; repeat from * across to last 2 ch, sc in last 2 ch, turn—10 (11, 12, 13, 14, 15) pattern repeats.

Beginning with Row 2 of pattern, work in Arcade pattern until piece measures 12 (12, 12, 13, 13, 14)"/30.5 (30.5, 30.5, 33, 33, 35.5)cm from beginning. Fasten off.

BELT (optional)

With smaller hook and holding 2 strands of yarn together, ch 10.

Row 1: Sc in 2nd ch from hook and in each remaining ch across, turn—9 sc.

Row 2: Ch 1, sc in each sc across, turn.

Repeat last row until piece measures 64"/163cm from beginning (or desired length). Fasten off.

FINISHING

Sew shoulder seams. Sew in sleeves. Sew side and sleeve seams. Center foundation row of collar over center back neck, and sew to neck edge.

Front Edging

Row 1: With RS facing, join yarn with sc in lower front corner to work up front edge, sc evenly spaced up front edge, around edges of collar, and down other front edge, turn.

Rows 2 and 3: Ch 1, sc in each sc across, turn. Fasten off.

Using yarn needle, weave in all ends. Block lightly, if desired.

Arcade Stitch (reduced sample)

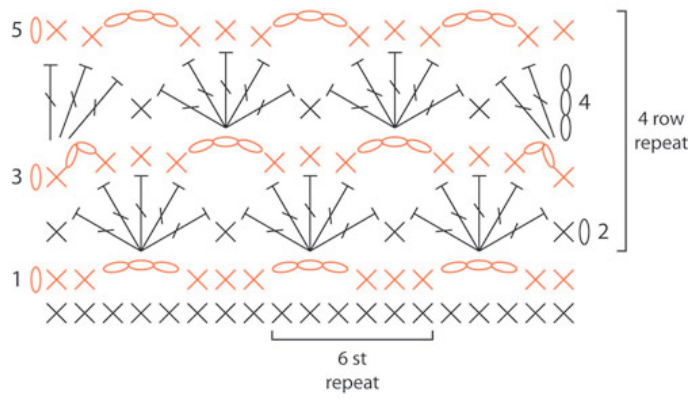
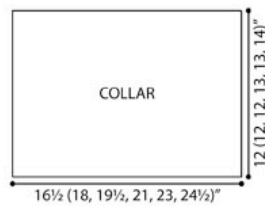
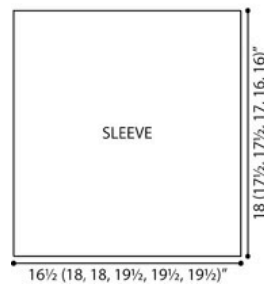
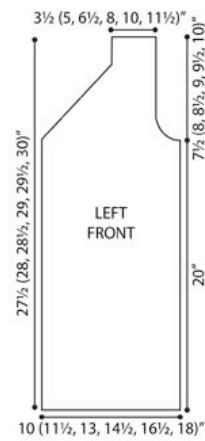
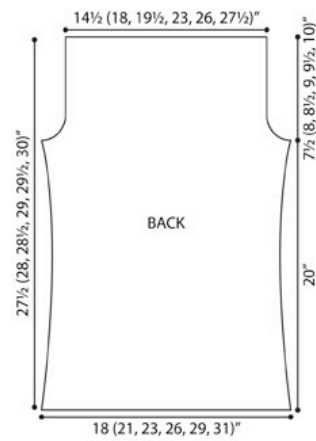


Diagram Key

- = chain (ch)
- × = single crochet (sc)
- ⌋ = double crochet (dc)



© 2011 Caron International