



SIZES

To fit chest measurement


18 mos	21" [53.5 cm]
2	22" [56 cm]
4	23" [58.5 cm]

Finished chest (will stretch to fit)

18 mos	20" [51 cm]
2	21" [53.5 cm]
4	22" [56 cm]

MATERIALS

Bernat® Cottonish® by Vickie Howell (70 g/2.4 oz; 258 m/282 yds)

Sizes	18 mos	2	4	
	Cotton Candy (85416)	2	2	3 balls

Sizes 3.75 mm (U.S. 5) and 4.5 mm (U.S. 7) circular knitting needles 20" [50 cm] long. Set of four size 4.5 mm (U.S. 7) double-pointed knitting needles **or size needed to obtain gauge**. Size 4 mm (U.S. G/6) crochet hook for collar and edging. 6 stitch markers. 2 stitch holders. Button.

GAUGE

20 sts and 27 rows = 4" [10 cm] with larger needles in stocking st.

ABBREVIATIONS

www.bernat.com/abbreviations

Alt = Alternate(ing)	PM = Place marker
Ch = Chain(s)	Pat = Pattern
Cont = Continue(ity)	Rem = Remaining
Dc = Double crochet	Rep = Repeat
Dec = Decrease	Rnd(s) = Round(s)
Inc = Increase(ing)	RS = Right side
K = Knit	Sc = Single crochet
K2tog = Knit next 2 stitches together	Sl st = Slip stitch
M1 = Make 1 stitch by picking up horizontal loop lying before next stitch and knitting into back of loop	Sp = Space
	Ssk = Slip next 2 stitches knitwise one at a time. Pass them back onto left-hand needle, then knit through back loops together.
P = Purl	St(s) = Stitch(es)
	WS = Wrong side
	Yo = Yarn over

Lace Panel Pat (worked over 11 sts). (See chart on page 2).

1st row: K2tog. yo. K7. yo. ssk.

2nd and alt rows: P11 (when working in rows). K11 (when working in rnds).

3rd row: K1. K2tog. yo. K5. yo. ssk. K1.

5th row: K2. K2tog. yo. K3. yo. ssk. K2.

7th row: K3. K2tog. yo. K1. yo. ssk. K3.

8th row: As 2nd row.

These 8 rows form Lace Panel Pat.

INSTRUCTIONS

The instructions are written for smallest size. If changes are necessary for larger sizes the instructions will be written thus (). Numbers for each size are shown in the same color throughout the pattern. When only one number is given in black, it applies to all sizes.

Notes:

- Dress is worked in one piece from neck edge down. Yoke is worked in rows until back opening is complete, then is joined in rnd for remainder of Dress.
- Use separate colored st markers to indicate Lace Panel Pat to avoid confusion with markers for increases.

Yoke

With larger needle, cast on **55 (59-67)** sts.

Working back and forth across needle in rows, proceed as follows:

1st row: (RS). Knit.

2nd row: K1. Purl to last st. K1.

3rd row: Knit.

4th row: K1. **P8 (9-10)** (right back). PM on next st for inc and purl this st. **P7 (7-9)** (right sleeve). PM on next st for inc and purl this st. **P19 (21-23)** (front). PM on next st for inc and purl this st. **P7 (7-9)** (left sleeve). PM on next st for inc and purl this st. **P8 (9-10)** (left back). K1.



5th row: *(Knit to inc st marker. yo. Knit marked st. yo) twice.* K4 (5-6). PM for Lace Panel Pat. Work 1st row of Lace Panel Pat across next 11 sts. PM for Lace Panel Pat. Rep from * to *. Knit to end of row. **63 (67-75)** sts. Lace Panel Pat is now in position.

6th and alt (WS) rows to 20th row: K1. Purl to last st. P1.

7th, 9th, 11th, 13th, 15th, 17th and 19th rows: *(Knit to inc st marker. yo. Knit marked st. yo) twice.* Knit to lace marker. Slip lace marker. Work appropriate row of Lace Panel Pat across next 11 sts. Slip lace marker. Rep from * to *. Knit to end of row.

Join in rnd: 21st rnd: *(Knit to inc st marker. yo. Knit marked st. yo) twice.* Knit to lace marker. Slip lace marker. Work appropriate row of Lace Panel Pat across next 11 sts. Slip lace marker. Rep from * to *. Knit to end of row. Join in rnd, placing a marker on first st.

22nd rnd: Knit.

Keeping cont of Lace Panel Pat, rep last 2 rnds **5 (6-7)** times more. **167 (179-195)** sts.

Divide for Body: Next rnd: K24 (26-28). Slip next **35 (37-41)** sleeve sts onto a st holder. K49 (53-57) (keeping cont of Lace Panel Pat). Slip next **35 (37-41)** sleeve sts onto a st holder. K24 (26-28). **97 (105-113)** sts.

Body: Keeping cont of Lace Panel Pat, knit in rnds until **6 (7-8)** total repeats of Lace Panel Pat are complete.

Waistband: Change to smaller needle.

Next rnd: Knit, dec **1 (1-5)** st(s) evenly around. **96 (104-108)** sts.

Next 8 rnds: *K2. P2. Rep from * around. Place marker at end of last rnd.

Skirt: Change to larger needle.

Next rnd: *K3. M1. Rep from * to last **0 (2-0)** sts. K0 (2-0). **128 (138-144)** sts. Knit even in rnds until Skirt measures **7 (8-9)" [18 (20.5-23) cm]** from marker below Waistband.

Next rnd (eyelets): *K2tog. yo. Rep from * around.

Next 3 rnds: Knit.

Next rnd: Purl.

Next rnd: Knit.

Rep last 2 rnds once more. Cast off.

Sleeves

With RS facing and set of 4 needles, K**35 (37-41)** from sleeve st holder and pick up and knit 3 sts at dividing space of underarm. Divide sts onto 3 needles. Join in rnd, placing a marker on first st. **38 (40-44)** sts. Knit 3 rnds.

Cast off, leaving last st on needle. **Do not** break yarn. Slip rem st onto crochet hook and work edging as follows:

Edging: 1st rnd: Ch 1. Work **38 (40-44)** sc evenly around sleeve edge. Join with st to first sc.

2nd rnd: Ch 1. 1 sc in same sp as last sl st. *Ch 4. Sl st in 4th ch from hook – picot made. Ch 1. Miss next sc. 1 sc in next sc. Rep from * around, omitting sc at end of last rep. Join with sl st to first sc. Fasten off.

Collar

1st row: With RS of Dress facing and crochet hook, join yarn with sl st at corner of Left Back neck edge. Ch 1. Work **54 (58-66)** sc evenly across neck edge to opposite corner. Turn.

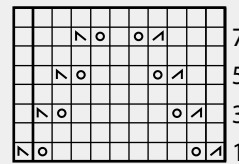
2nd row: Ch 3 (counts as dc). 1 dc in next sc. *2 dc in next sc. 1 dc in each of next 3 sc. Rep from * to end of row. Turn. **67 (72-82)** dc.

3rd row: Ch 1. 1 sc in first dc. *Picot. Ch 1. Miss next dc. 1 sc in next dc. Rep from * to last **0 (1-1)** dc. 1 sc in last **0 (1-1)** dc. Fasten off.

Button Loop: With RS of Dress facing and crochet hook, join yarn with sl st at corner of Left Back neck edge. Ch 7. Sl st in same sp as first sl st. Fasten off.

Sew on button to correspond to loop.

Chart



Key

- = Knit on RS rows. Purl on WS rows.
- ◻ = yo
- ◻ = ssk
- ◻ = K2tog

Start Here

